



THE *Fairmont*
BANFF SPRINGS

UNRIVALLED MAJESTY,
HOSPITALITY AND SCENERY

Canada's castle in the Rockies

Nestled in the Canadian Rockies, in one of the country's most renowned national parks, you will find an absolute treasure: The Fairmont Banff Springs. Few hotels in the world can rival the majesty, hospitality and scenery of this symbol of Rocky Mountain magnificence. Styled after a Scottish baronial castle, The Fairmont Banff Springs offers stunning vistas, championship golf courses, unparalleled skiing, classic cuisine and a world-class, European-style spa — as well as Canada's most diverse and extensive resort meeting facilities. Whether you visit for business or pleasure, be assured that every stay is characterized by timeless beauty, luxurious comfort and impeccable service, all surrounded by breathtaking, pristine wilderness.



GUEST ROOMS AND SUITES

Every one of our 768 guest rooms offers superb appointments and world-class amenities — all complemented by our attentive, personalized service. From cozy rooms tucked away in quiet corners of the castle to spacious suites with sweeping Rocky Mountain views, The Fairmont Banff Springs, a UNESCO World Heritage Site, has the perfect accommodation for you.

Room and suite selections

- Fairmont Room
- Deluxe Room
- Deluxe Premier Room
- Signature Room
- Junior Suite
- Executive Suite
- One-Bedroom Suite
- Two-Bedroom Suite
- Presidential Suite

Guest room amenities and features

- High-speed Internet access (including wireless access)
- Windows that open for fresh mountain air
- Alarm clock radio
- Cable television with in-room movies and video games
- Coffee maker/teapot
- Hair dryer
- Iron and ironing board
- Telephone with voice mail

Guest room facilities and services

- Crib, rollaway or sofa bed
- Babysitting
- Laundry and dry cleaning
- Ski, golf-club and bike storage
- Wheelchair accessibility
- Pet-friendly rooms

FAIRMONT GOLD

Fairmont Gold, our exclusive hotel experience, promises special privileges and discreet and attentive service designed to meet the needs of the most discerning corporate or leisure guest. Your Fairmont Gold experience begins the moment you arrive at the front door, where you'll be directed to the private Fairmont Gold reception area. Here, your individuality is valued, your room preferences are honoured, and your arrangements for a quick and effortless departure are anticipated. This is an ideal "hotel within a hotel" solution for smaller groups who want to enjoy the most exclusive experience.

Fairmont Gold room and suite selections

- Fairmont Gold Room
- Fairmont Gold Deluxe Room
- Fairmont Gold Junior Suite
- Fairmont Gold One-Bedroom Suite
- Fairmont Gold Two-Bedroom Suite

Fairmont Gold guest room amenities, features and services

- Access to the exclusive Fairmont Gold Lounge
- Complimentary deluxe breakfast, evening hors d'oeuvres
- Dedicated Fairmont Gold Concierge team
- Express check-in and checkout
- In-room DVD players
- Access to Fairmont Gold DVD/CD library

FOOD AND BEVERAGE CHOICES AT THE FAIRMONT BANFF SPRINGS

Waldhaus Restaurant: Our 1927 Bavarian cottage-style "house," featuring authentic German and Swiss dishes.

Waldhaus Pub: Relaxed, cozy atmosphere, serving up pub fare and locally brewed beer.

The Banffshire Club: An exquisite epicurean experience — from savoury garlic soup to fresh arugula pasta with lobster to succulent meats from our Maplewood charcoal grill.

The Banffshire Club Private Dining Room:

Up to 12 people can enjoy an elite and extraordinary private dining experience.

Bow Valley Grill: Three meals daily from a unique open kitchen, including breakfast overlooking the sunrise on the Fairholme Mountain Range.

Castello Ristorante: Exquisite Italian cuisine and atmosphere, with an extraordinary wine list.

Castle Pantry: Open 24 hours a day, with scrumptious salads, sandwiches, soups and meals to go.

Golf Course Clubhouse (seasonal): The perfect place to tee your afternoon off with a great meal.

Grapes Wine Bar: Our wine bar and bistro, serving up fondues, pâtés, cheeses, salads and extraordinary Canadian wines.

Ramsay Lounge: The place to gather for ports, Scotches or cocktails.

Rundle Lounge: A fine selection of beer, Scotch, cognac, wine and classic cocktails, with afternoon tea service and an all-day dining menu.

Samurai Sushi Bar and Restaurant: A true taste of Japan, with the finest sushi and sashimi, and hot-pot dinners.

Weekend brunch: Our famous brunch buffet, with a tantalizing selection of favourites.

In-room dining: Fine cuisine in the privacy and comfort of your own room.

Authentically Local Wine Store: Discover the wonderful wines being produced within the growing regions of Canada. Our wine store is the perfect venue for private receptions, wine tastings and cooking demonstrations.

images from left to right

FAIRMONT GOLD SUITE, BANFF WINTER EXTERIOR, MT. STEPHEN HALL



WINTER ACTIVITIES

Three extraordinary ski areas

The Fairmont Banff Springs offers shuttle service to three extraordinary downhill ski and snowboard areas — Mount Norquay, Sunshine Village and Lake Louise Ski Area. The ski season typically runs from mid-November to mid-May. Pick a favourite run or ski different terrain each day, with a tri-area ski pass. Hit the slopes immediately or take advantage of tailored instruction from some of the country's best ski professionals.

Mount Norquay, a 10-minute drive away, offers a wide range of terrain, as well as night skiing. Sunshine Village, a 25-minute drive away, boasts an annual average of nine metres (30 feet) of natural powder — and the longest ski season in Canada. Lake Louise, a 45-minute drive away, boasts a 990-metre (3,250-foot) vertical drop, spread over four mountain faces, and is the host site for the Men's and Women's World Cup ski races.

Cross-country and heli-skiing

Take in the awesome views along the cross-country trails, accessible from your doorstep, or book an extreme adventure and the ultimate thrill — heli-skiing.

Other winter activities

- Dog sledding, sleigh rides, snowmobiling
- Ice-skating, ice fishing, curling
- Hiking, snowshoeing, canyon ice walks

SUMMER ACTIVITIES

The Fairmont Banff Springs Golf Course

Renowned for its panoramic beauty, The Fairmont Banff Springs Golf Course is a captivating and challenging layout set in the heart of Canada's Rocky Mountains. The championship course — with 18 holes designed by Stanley Thompson in 1928, and nine holes added in 1989 — is a delight for amateurs and professionals alike.

Other summer activities

- Mountain biking, hiking, horseback riding
- Canoeing/kayaking
- Boat rentals, guided charter fishing trips, river float trips, whitewater rafting
- Tennis
- Sightseeing tours and cruises

All-season activities

- Enjoying the town of Banff
- Bowling Centre
- Indoor and outdoor swimming pools, children's wading pool
- Hot springs
- Gondola
- Heritage Tours of the castle

SPA AND FITNESS

Willow Stream Spa

For first-class pampering surrounded by majestic mountain beauty, visit our 3,530-square-metre (38,000-square-foot) Willow Stream Spa. Reminiscent of the hot springs that beckoned travellers over 100 years ago, the pulsating waterfalls and the mineral pool in the heart of the spa rejuvenate tired muscles and soothe troubled spirits. This calming retreat has won a number of awards, including *Celebrated Living Readers' Choice #1 International Spa*, *Condé Nast Traveler Top 250 Spas* in the U.S., Canada and Mexico, and *Spa Magazine* Favorite Spas for Couples — International, among many others.

The spa features:

- 23 treatment rooms
- Men's/women's locker areas and lounges
- Deluxe couples' suite
- Men's/women's whirlpools, steam rooms, saunas and eucalyptus inhalation rooms
- Three waterfall-treatment whirlpools
- Indoor European therapeutic mineral pool
- Outdoor whirlpool
- Full-service hair salon and nail spa
- Co-ed lounge

Fitness centre

- Our full-service fitness centre features:
- Personal training and fitness assessments; regularly scheduled fitness classes, including yoga, conditioning, cardio; fitness walks
 - Machine and free weights, elliptical trainers, stationary bikes, treadmills
 - 32-metre (105-foot) lap pool
 - Indoor hot tub

A MAGNIFICENT HISTORY

For more than a century, guests from around the world have marvelled at the splendour of Banff National Park and its grand hotel. It was advertised as the "Finest Hotel on the North American Continent" when it first opened for business in 1888 — and, having been lovingly maintained, The Fairmont Banff Springs continues its tradition of excellence.

EXPLORING BANFF

The Fairmont Banff Springs is just steps away from the town of Banff — an authentic mountain town offering a great diversity of year-round shopping, dining and night life, in addition to art and cultural events. Shop or discover the talent and history of the area through its galleries.

AVERAGE

TEMPERATURES (Celsius/Fahrenheit)	high °C/°F	low °C/°F
Winter	2/36	-9/16
Summer	25/77	7/45

GENERAL INFORMATION

- Time zone Mountain Standard Time (UTC -7:00 hours)
- Currency Canadian dollar (CAD)
- Taxes 2% Tourism Improvement Fee
5% Goods and Services Tax (GST)

images from left to right

MOUNT NORQUAY SKIING, WILLOW STREAM SPA, THE FAIRMONT BANFF SPRINGS GOLF COURSE

MEETINGS AND EVENTS

The Fairmont Banff Springs consistently amazes meeting planners, and with over 6,995 square metres (72,000 square feet) of versatile function and exhibit space, your event will be a perfect fit. Whether it is a welcome reception in the baronial grandeur of Mt. Stephen Hall, a state-of-the-art presentation in the contemporary Van Horne Ballroom, or a gala dinner enriched by the Cascade Ballroom's classic, 19th-century beauty, our dedicated Conference Services team will ensure that your event is marked by impeccable taste and gracious hospitality.

BUSINESS SERVICES

The DATA Group Business Centre at The Fairmont Banff Springs offers a wide range of business services, including

high-speed Internet access, FedEx courier service, faxing, full-colour printing, copying, laminating and cutting.

Audiovisual services

Whether you're planning an intimate board meeting or an elaborate production, we mix creativity with the right technology to make you look like a hero. With PSAV® Presentation Services, you're guaranteed an exciting, stress-free and rewarding communications experience.

Exhibition services

GES has helped clients create memorable exhibit experiences. From small trade-show portfolios to some of the largest footprints ever built, we provide turnkey exhibition services — from exhibit planning and trade-show design, to building and executing complete exhibit programs.

SELECT AWARDS

Smart Meetings Platinum Choice

Meetings West Best of the West

Travel + Leisure Golf

#1 Golf Course in Canada

Golf Magazine Premier Resorts

Condé Nast Traveler

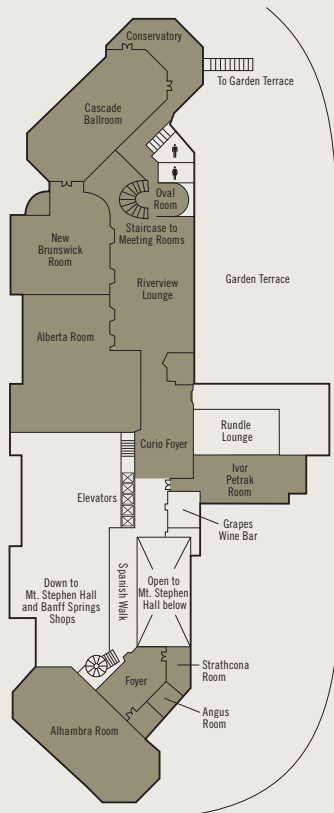
Readers' Choice, Top 50 Ski Resorts, Gold List

Travel + Leisure

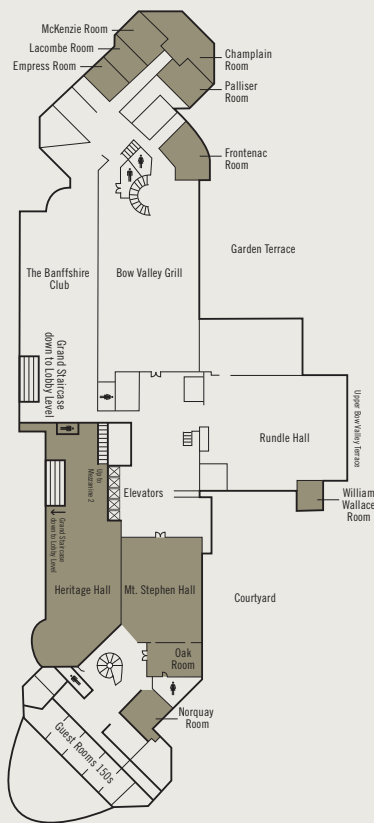
Top 500 Hotels in the World

CONFERENCE FLOOR LAYOUT

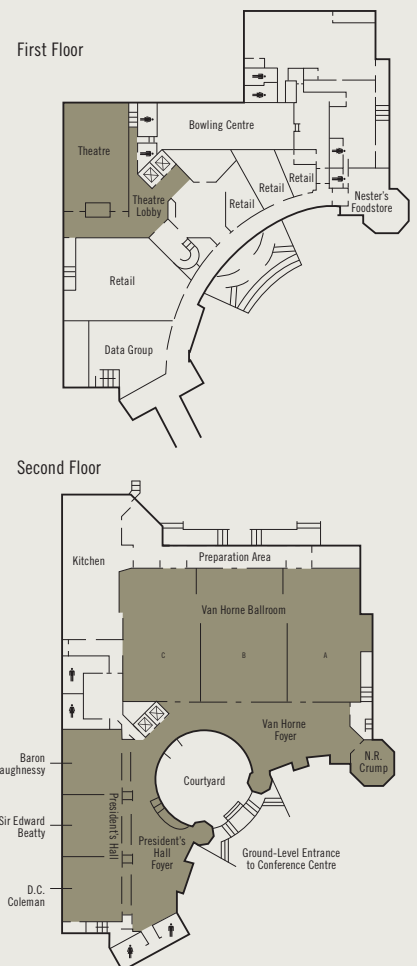
Mezzanine II



Mezzanine I



Conference Centre



FUNCTION ROOM CAPACITIES

ROOMS	OVERALL DIMENSIONS		SQUARE		HEIGHT		CAPACITIES								
	METRES	FEET	METRES	FEET	METRES	FEET	THEATRE	BOARDROOM	U-SHAPE	CLASSROOM	HOLLOW SQUARE	CRESCENT	ROUNDS OF 8	ROUNDS OF 10	RECEPTION
MEZZANINE II															
Cascade Ballroom	15.5 x 34.1	50'10" x 111'10"	476.5	5,129	4.5	14'8"	450	–	80	300	94	170	280	340	450
Conservatory	12.2 x 18.9	40' x 62'	230.6	2,481	–	–	70	36	30	–	34	35	56	70	100
New Brunswick Room	19.51 x 16.07	64' x 52'8"	205.2	2,209	3.6	11'9"	200	38	50	112	66	80	184	160	175
New Brunswick Extension	10 x 16.07	32'10" x 52'8"	112	1,206	3.6	11'9"	120	38	46	48	54	40	88	80	85
Alberta Room	18.07 x 20.97	59'4" x 68'10"	293.8	3,162	3.6	11'9"	250	–	62	176	84	100	216	200	295
Alberta/New Brunswick	18.07 x 37.04	59'4" x 121'6"	611	6,577	3.6	11'9"	450	–	–	288	–	180	400	360	560
Riverview Lounge	30.3 x 15.5	99'5" x 50'10"	471.5	5,075	3.7	12'3"	–	–	–	–	–	–	–	–	500
Ivor Petrak Room	22.2 x 6.7	72'10" x 22'	169.5	1,825	3.0	10'	100	50	52	80	64	40	64	80	130
Strathcona Room	6.6 x 4.8	21'7" x 15'8"	32.7	352	3.5	11'6"	20	12	–	–	–	–	–	–	16
Angus Room	10.1 x 5.3	33'1" x 17'5"	57.6	620	4.2	13'7"	30	26	–	–	–	–	–	–	30
Alhambra Room*	14.6 x 34.4	47'11" x 112'10"	516.7	5,562	4.5	14'6"	450	–	80	300	100	170	280	340	450
Alhambra Foyer	7.3 x 7.3	23'11" x 23'11"	62.4	672	4.5	15'	–	–	–	–	–	–	–	–	50
Curio Foyer	4.9 x 11.1	16'1" x 36'5"	157.5	1,695	6.1	20'	–	–	–	–	–	–	–	–	–
MEZZANINE I															
Oak Room	10.1 x 6.4	33'1" x 21'	68.5	737	2.9	9'5"	50	28	25	32	32	20	40	40	50
Norquay Room	8.9 x 7	29'2" x 23'	65.5	705	2.6	8'6"	50	24	25	32	32	20	40	40	50
Mt. Stephen Hall	22.1 x 11.1	72'6" x 36'5"	247.5	2,665	6.9	22'6"	250	60	78	100	96	75	136	150	250
Empress Room	6.7 x 6.1	22' x 20'	27.5	296	2.7	8'8"	28	12	12	16	16	5	8	10	20
Lacombe Room	6.1 x 3.7	20' x 12'1"	23.4	252	2.7	8'8"	–	8	–	–	–	5	8	10	–
Palliser Room	7.9 x 7.6	25'11" x 24'11"	37.7	406	2.7	8'8"	40	20	22	24	22	15	32	30	35
Frontenac Room	9.5 x 11.8	21'2" x 38'8"	66.7	718	2.9	9'6"	40	30	28	24	32	20	40	40	40
McKenzie Room	7.9 x 7.9	25'11" x 25'11"	41.3	432	2.6	8'5"	40	20	22	24	22	15	32	30	35
Champlain Room	8.5 x 11.9	27'11" x 39'	76.4	810	2.6	8'5"	60	32	26	32	32	26	40	40	45
Heritage Hall	9.1 x 6.1	29'10" x 20'	80.2	864	4.3	14'	–	–	–	–	–	–	–	–	40
Heritage Foyer	6.1 x 2.4	20' x 7'11"	116.9	1,258	2.5	8'2"	–	–	–	–	–	–	–	–	–
William Wallace Room	8.5 x 5.8	27'11" x 19'	53.5	576	3.4	12'4"	24	–	–	–	–	18	24	30	30
CONFERENCE CENTRE															
Theatre Lobby	4.9 x 9.1	16'1" x 29'10"	50	540	2.9	9'5"	–	–	–	–	–	–	–	–	100
Van Horne Blrm A, B, C	27.9 x 50	91'6" x 164'	1,376.3	14,815	6.8	22'3"	1,500	–	–	975	–	525	840	1,050	1,200
Van Horne Blrm A&B or B&C	27.9 x 33.8	91'6" x 110'11"	960.1	10,335	6.8	22'3"	1,000	–	–	625	–	350	560	700	800
Van Horne A, B or C	27.9 x 17.7	91'6" x 58'1"	464.1	4,995	6.8	22'3"	450	–	90	300	112	175	280	350	400
N.R. Crump*	7.6 x 7.9	24'11" x 25'11"	55.5	597	4.2	13'6"	47	22	22	–	20	15	24	30	40
Prefunction	39.3 x 9.1	128'11" x 29'10"	695	7,480	3.4	11'2"	–	–	–	–	–	–	–	–	625
President's Hall	12.4 x 39.6	40'8" x 129'11"	495	5,330	3.7	12'2"	400	–	120	300	132	135	288	270	500
Baron Shaughnessy	12.4 x 13.2	40'8" x 43'4"	159.8	1,720	3.7	12'2"	120	36	40	80	48	45	96	90	120
Sir Edward Beatty	12.4 x 13.2	40'8" x 43'4"	163.5	1,760	3.7	12'2"	120	36	40	80	48	45	96	90	120
D.C. Coleman	12.4 x 13.2	40'8" x 43'4"	159.8	1,720	3.7	12'2"	120	36	40	80	48	45	96	90	120
Baron Shaughnessy/ Sir Edward Beatty	12.4 x 26.4	40'8" x 86'7"	323.3	3,480	3.7	12'2"	300	–	64	192	96	90	192	180	300
D.C. Coleman/ Sir Edward Beatty	12.4 x 26.4	40'8" x 86'7"	323.3	3,480	3.7	12'2"	300	–	64	192	96	90	192	180	300
1968	8.23 x 8.23	27' x 27'	63.7	675	2.7	9'	50	24	28	32	36	18	40	30	56
1970	8.23 x 8.23	27' x 27'	63.7	675	2.7	9'	50	24	28	32	36	18	40	30	56
1972–1980	8.53 x 4.27	28' x 14'	32.3	338	2.7	9'	16	10	–	8	–	4	8	–	–

* This room is not recommended for meetings with audiovisual equipment, due to the large number of uncurtained windows.
Please note: These guidelines are maximums and do not include extras such as stages, dance floor, podiums or audiovisual equipment.



BRITISH COLUMBIA | CANADA

ALBERTA | CANADA

Vancouver
THE FAIRMONT VANCOUVER AIRPORT
THE FAIRMONT HOTEL VANCOUVER
FAIRMONT PACIFIC RIM
THE FAIRMONT WATERFRONT

Victoria
THE FAIRMONT EMPRESS

Whistler
THE FAIRMONT CHATEAU WHISTLER

Lake Louise
THE FAIRMONT CHATEAU LAKE LOUISE

Banff
THE FAIRMONT BANFF SPRINGS

Calgary
THE FAIRMONT PALLISER

Jasper
THE FAIRMONT JASPER PARK LODGE

Edmonton
THE FAIRMONT HOTEL MACDONALD

Easy access to The Fairmont Banff Springs

Your Canadian Rocky Mountain adventure awaits, a scenic, 75-minute drive west of Calgary International Airport. The airport is served by most major airline carriers and all major car-rental agencies. Limousine and regularly scheduled shuttle services — direct to the hotel — are also available for individuals or groups.

From Calgary International Airport (about 75 minutes):

- Take Barlow Trail to Airport Trail, then turn west.
- On Airport Trail, exit north onto Deerfoot Trail (Highway #2).
- Take Deerfoot Trail North, then exit onto Stoney Trail West.
- Continue on Stoney Trail for approximately 20 minutes until you reach Highway #1 (also known as 16th Avenue).
- Turn right (west) onto Highway #1.
- Continue on Highway #1 for approximately 1 hour until you reach the Banff National Park entrance gates.
- Stop at the park gates for your park pass.
- Continue driving west for approximately 10 minutes and take exit to Banff (noted as Banff/Lake Minnewanka).
- At the stop sign, turn left onto Banff Avenue.
- Follow Banff Avenue to the end (over a bridge).
- After the bridge, turn left and stay in the left lane, taking Spray Avenue.
- This street will take you directly to the front doors of the hotel.

FLYING TIMES TO CALGARY INTERNATIONAL AIRPORT (YYC)

Beijing	18	New York	5
Chicago	3.5	Paris	8
Dallas	4	Rome	9
Frankfurt	8	São Paulo	14
Houston	4	Shanghai	18
London	8	Sydney	17
Los Angeles	3	Tokyo	11
Mexico City	6	Toronto	3.5
Miami	5.5	Vancouver	1
Montréal	4.5		

405 Spray Avenue
 Banff, Alberta
 Canada T1L 1J4
 TEL +1 403 762 2211
 FAX +1 403 762 5755
 E-MAIL banffsprings@fairmont.com

For reservations contact:
 1 800 441 1414 or visit www.fairmont.com



Fairmont Hotels & Resorts has been a WWF Climate Savers partner since 2009 and has committed to reducing its emissions by 20% below 2006 levels by 2013.