



THE
Fairmont
COPLEY PLAZA
BOSTON

ESSENTIALLY BOSTON IN EVERY DETAIL

Welcome to The Fairmont Copley Plaza, Boston's most celebrated address

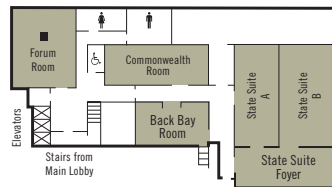
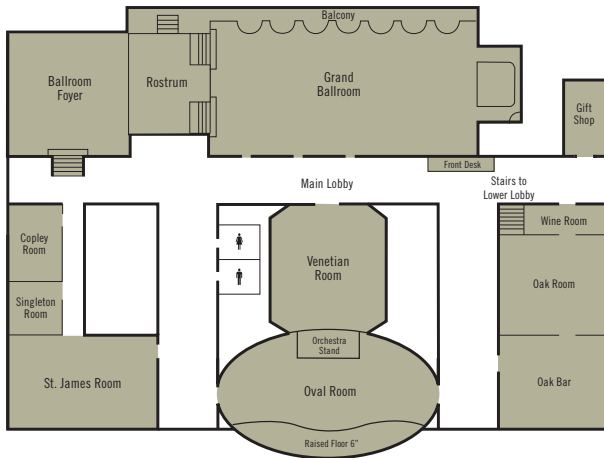
When you walk down Peacock Alley and enter the grand Lobby, you are enveloped in Renaissance splendor — from the Waterford crystal chandeliers and majestic coffered ceilings to the stunning marble floors and opulent French antiques. The guest rooms perfectly complement the grandeur of the lobby, and while classic in design, each is fully appointed for today's business pace. From the most intimate gathering to the grandest affair, The Fairmont Copley Plaza offers more than 23,000 square feet of the most unique meeting space in Boston. The elegant, gilded Grand Ballroom can entertain more than 1,000 guests. For more intimate surroundings, you may select the distinguished elegance of the Oval Room or the St. James Room, both of which overlook Copley Square. A dedicated and professional staff delivers incomparable hospitality and impeccable attention to detail to ensure you enjoy a perfectly orchestrated event or meeting from start to finish. The Fairmont Copley Plaza is located in the heart of the historic Back Bay within walking distance to all of Boston's cultural sites and attractions, including the Museum of Fine Arts and Symphony Hall. The hotel is also in the city's most popular shopping area with Newbury Street and the Copley Place shopping center just steps away.

THE FAIRMONT COPLEY PLAZA ENTRANCE (top left), DINING ROOM OF PRESIDENTIAL SUITE (bottom left) AND THE OVAL ROOM (right)



MAIN LOBBY LEVEL

LOWER LOBBY LEVEL



MEETING AND EVENT FACILITIES

23,000 square feet of meeting space

ROOMS

Total Rooms: 383, Fairmont Gold: 59, Suites: 17

ROOMS	OVERALL DIMENSIONS		SQUARE		HEIGHT		CAPACITIES							
	FEET	METERS	FEET	METERS	FEET	METERS	CLASSROOM	THEATER	BANQUET 10	CONFERENCE	U-SHAPE	H-SQUARE	RECEPTION	
MAIN LOBBY LEVEL														
Grand Ballroom	104' x 55'	31.70 x 16.76	5720'	531.29	28'	8.53	375	800	640	50	50	60	1100	
Rostrum	--	--	963'	293.52	--	--	--	--	50	--	--	--	--	
Balcony	--	--	--	--	--	--	--	--	130	--	--	--	--	
Ballroom Foyer	47' x 45'	14.33 x 13.72	2115'	196.61	15'6"	4.76	125	250	250	40	45	48	450	
Venetian Room	48' x 49'	14.63 x 14.94	2025'	218.51	18'	5.49	125	250	240	30	45	48	250	
Oval Room	84' x 60'	25.60 x 18.29	4050'	376.26	18'	5.49	240	450	330	40	45	48	500	
St. James Room	48' x 31'	14.6 x 9.45	1488'	137.97	18'	5.49	85	140	110	30	30	35	200	
Singleton Room	31' x 17'	9.45 x 5.18	527'	48.95	18'	5.49	24	40	40	25	--	25	75	
Copley Room	48' x 20'	12.19 x 6.10	810'	75.25	19'	5.79	42	40	40	25	25	25	50	
LOWER LOBBY LEVEL														
State Suite	48' x 44'	14.63 x 13.41	2112'	196.19	10'	3.05	110	210	210	40	45	48	250	
State Suite A	44' x 21'	13.41 x 6.40	924'	85.82	10'	3.05	42	80	80	30	30	35	100	
State Suite B	44' x 27'	13.41 x 8.23	1188'	110.36	10'	3.05	70	130	130	30	40	45	150	
State Suite Foyer	36' x 17'	10.97 x 5.18	612'	56.82	10'	3.05	25	40	40	25	25	20	50	
Back Bay Room	33' x 19'	10.06 x 5.79	627'	58.25	9'	2.74	30	40	40	30	25	25	40	
Commonwealth Room	48' x 18'	14.63 x 5.49	864'	80.32	9'	2.74	45	80	60	40	40	48	75	
Forum Room	34' x 36'	10.36 x 10.97	1224'	113.65	9'	2.74	50	75	80	25	20	25	80	

FACILITIES

- High-speed Internet access
- Club Level, Fairmont Gold
- 1 lounge and 1 restaurant
- Meeting facilities (capacity 10–1,000)
- 24-hour In-Room Dining
- Fitness facility

LOCAL ATTRACTIONS

- Boston Common
- The Hynes Convention Center
- The Boston Convention & Exhibition Center
- Copley Place shopping center
- Faneuil Hall/Quincy Market
- Freedom Trail, Paul Revere's House
- Boston Public Garden
- USS Constitution, nicknamed "Old Ironsides"

CULTURAL ATTRACTIONS

- Old North Church, Christ Church
- Symphony Hall, home of the Boston Symphony Orchestra and Boston Pops
- Boston Public Library
- Fenway Park, home of the Boston Red Sox
- TD Banknorth Garden, home of the Boston Celtics and Boston Bruins
- JFK Library and Museum
- Trinity Church
- The Museum of Fine Arts, Boston

AVERAGE

TEMPERATURES high low
(Celsius/Fahrenheit) °C/°F °C/°F

Winter	(Jan–Mar)	0/40	-6/21
Spring	(Apr–Jun)	22/72	7/45
Summer	(Jul–Sep)	24/75	16/61
Fall	(Oct–Dec)	10/50	-4/25

The Fairmont Copley Plaza

138 St. James Avenue
Boston, Massachusetts 02116
United States

TEL +1 617 267 5300

FAX +1 617 437 0794

E-MAIL boston@fairmont.com

www.fairmont.com/copleyplaza

For reservations contact:

1 800 441 1414 or visit www.fairmont.com



THE GRAND BALLROOM (left), AND THE STATE SUITES (right)