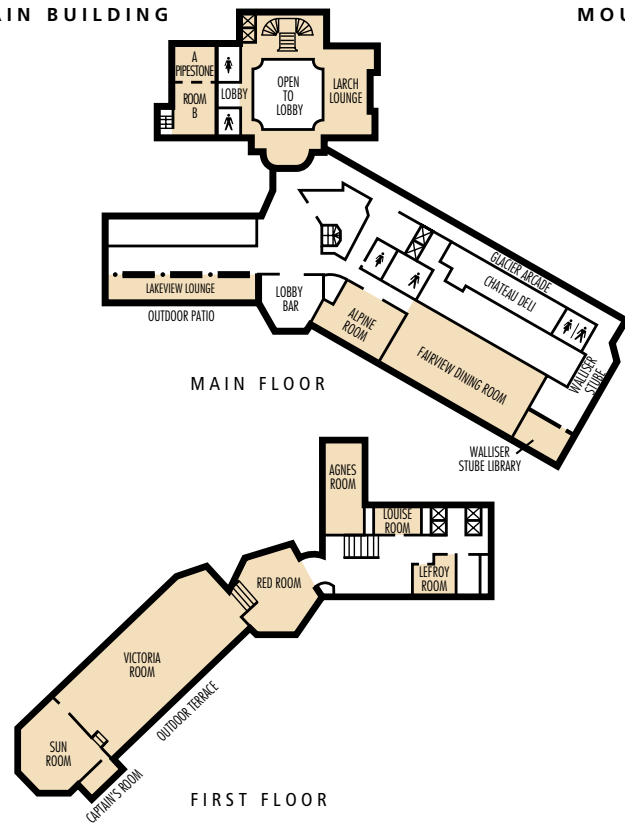
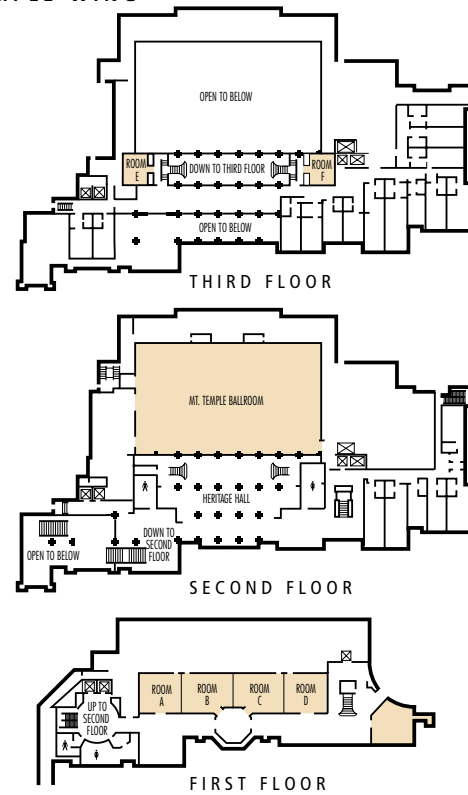


MAIN BUILDING



MOUNT TEMPLE WING



LAKE LOUISE

Surrounded by the snow-capped peaks of the Canadian Rockies and fed by the mountain-bound Victoria Glacier, Lake Louise's vibrant greens and blues have entranced visitors since its discovery.



Function/Meeting Rooms	OVERALL DIMENSIONS		SQUARE		HEIGHT		ROUNDS						
	STANDARD	METRIC	STANDARD	METRIC	STANDARD	METRIC	BOARDROOM	CLASSROOM	THEATRE	U-SHAPE	RECEPTION	X 8	X10
Mount Temple Wing													
Mount Temple Ballroom	123' x 72'	37.5 x 21.9	8856'	821	19'	5.8	-	450	832	-	750	560	650
Mount Temple Ballroom A, B or B, C	83' x 72'	25.3 x 21.9	5976'	554	19'	5.8	-	297	561	84	325	350	400
Mount Temple Ballroom A, B or C	40' x 72'	12.2 x 21.9	2880'	267	19'	5.8	-	132	242	42	200	150	170
Heritage Hall	93' x 90'	28.3 x 9.1	2790'	258	-	-	-	-	-	-	610	-	-
A. Beehive Trail Room	26' x 26'	8.0 x 8.0	721'	67	10'	3.0	24	33	60	20	60	32	40
B. Lakeshore Trail Room	26' x 34'	8.0 x 10.5	926'	86	10'	3.0	28	48	80	26	80	48	60
A. B. Beehive/Lakeshore	62' x 26'	18.9 x 7.9	1612'	149	10'	3.0	52	72	135	44	110	96	100
C. Plain of Six Glaciers Trail Room	26' x 34'	8.0 x 10.5	926'	86	10'	3.0	28	48	80	26	80	48	60
D. Saddleback Trail Room	26' x 26'	8.0 x 8.8	721'	67	10'	3.0	24	33	60	20	60	32	40
C. D. Plain of Six/Saddleback	62' x 26'	18.9 x 7.9	1612'	149	10'	3.0	52	72	135	44	110	96	100
E. Parker Room	25' x 21'	7.5 x 6.5	527'	49	10'	3.0	20	27	40	21	30	32	30
F. Mollison Room	21' x 20'	6.5 x 6.0	420'	39	10'	3.0	16	18	32	16	30	24	20
Main Building													
Victoria Room	120' x 50'	36.6 x 15.2	6000'	556	22'	6.7	-	350	650	-	500	320	450
Sun Room	30' x 30'	9.1 x 9.1	900'	83	11'	3.5	32	80	120	28	150	64	70
Agnes Room	30' x 18'	9.1 x 5.5	540'	50	10'	3.0	28	35	60	26	80	40	-
Louise Room	26' x 16'	7.3 x 4.9	416'	36	12'	4.0	24	16	35	20	35	24	-
Lefroy Room	24' x 16'	7.1 x 4.9	384'	35	11'	3.5	18	16	25	16	35	16	-
Pipestone Room (A & B)	25' x 50'	7.6 x 15	1250'	114	10'6"	3.2	48	70	140	48	140	80	80
Pipestone Room A	25' x 24'	7.6 x 7.3	600'	55	10'6"	3.2	24	35	70	20	75	40	40
Pipestone Room B	25' x 26'	7.6 x 7.9	650'	60	10'6"	3.2	24	35	70	20	75	40	40
Alpine Room	50' x 36'	15.2 x 10.9	1800'	165	16'	4.9	30	36	50	25	100	64	80
Lakeview Lounge	94' x 16'	48 x 4.8	1504'	451	20'	6.0	-	-	-	-	100	64	-
Walliser Stube Library	22' x 18'	6.6 x 5.4	396'	118.8	16'	4.9	20	-	-	-	35	24	-
Larch Lounge	48' x 21'	14.4 x 6.3	1008'	302.4	10'5"	3.2	-	-	-	-	375	-	-

AVERAGE TEMPERATURES (Celsius/Fahrenheit)			
	°C	°F	°C/F
	High	Low	
WINTER JANUARY - MARCH	2/36	-14/7	
SPRING APRIL - JUNE	10/50	6/43	
SUMMER JULY - SEPTEMBER	18/64	10/50	
FALL OCTOBER - DECEMBER	5/41	-10/14	

LOCATION

- Calgary International Airport (120 miles/192 km, approx. 2 hours)
- Banff (35 miles/56 km, approx. 35-minute drive)
- Lake Louise Ski Area (10 minutes by complimentary shuttle)

FACILITIES

- 24-hour Business Center
- Dedicated in-house audio/visual
- State-of-the-art technology
- 8 restaurants/lounges
- 24-hour in-room dining
- Health Club/indoor swimming pool
- Spa treatments
- Parking—400 cars, covered, and valet

LOCAL ATTRACTIONS

- Victoria Glacier—Climb to one of two alpine Tea Houses
- Columbia Icefields—Snocoach Tour on the prehistoric Athabasca Glacier
- Johnston Canyon—Summer waterfall and winter ice walks
- Lake Louise Gondola—Bear watching and Interpretive Center
- Lake Louise Ski Area—Alpine skiing
- Moraine Lake—Cross-country skiing

THE NEW MEETING SPACE AT THE FAIRMONT CHATEAU LAKE LOUISE

In the world-famous Canadian Rockies, discover the ultimate in business brilliance: the new Mount Temple Wing at The Fairmont Chateau Lake Louise. Designed to accommodate the needs of 21st-century business while paying tribute to the rich heritage and protected wildlife of this magnificent national park, the innovative Mount Temple Wing expands the Chateau's total meeting offering to 36,000 square feet, in a setting that has inspired visitors for well over a century. For meetings, conferences, executive retreats and incentive experiences, there is no finer destination.

LUXURY AND LEARNING

Balancing traditional luxury with learning adventure is a hallmark of The Fairmont Chateau Lake Louise experience. Our unique Mountain Heritage Programs and Themed Itineraries set the stage for memorable business activities, while over two dozen guided programs encourage participation and active knowledge.

ACCESSIBLE AND UNFORGETTABLE

A world away from ordinary resorts, The Fairmont Chateau Lake Louise offers secluded serenity that is easily accessed in a scenic 2-hour drive from the Calgary International Airport. Historic grandeur is complemented by state-of-the-art technology, the modern convenience of online RFP submission and a skilled Conference Services Team.

111 Lake Louise Drive
 Lake Louise, Alberta
 Canada T0L 1E0
 Telephone: 403 522 3511
 Fax: 403 522 3834



The new Mount Temple Wing features 18,000 sq. ft. of additional meeting space



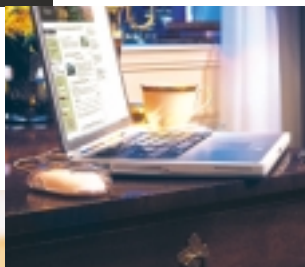
Mount Temple Ballroom



Heritage Hall stained glass windows



Tom Wilson Dining Room



24/7 Business Center



Escape Spa

**MOUNT TEMPLE WING:
A NATURAL PLACE FOR MEETINGS**

The unique ambiance of The Fairmont Chateau Lake Louise has always captured the imagination. Now business guests can enjoy the natural wonders of Lake Louise in a facility entirely dedicated to their needs. A seamless addition to the graceful architecture of the main Chateau, the new wing doubles the resort's existing function space to 36,000 square feet. Featuring a spacious ballroom capable of seating 700 theater-style, 6 new break-out rooms and a fully equipped 24/7 Business Center, the Mount Temple Wing also offers 81 luxurious new guestrooms guaranteed to make every guest feel like a VIP.

PRICELESS NATURE

The most inspired aspect of the new wing is the spectacular Heritage Hall, with soaring windows framed in stained glass panels illustrating the region's abundant wildlife in sun-drenched color. Bears, eagles, wolves, mountain goats and other animals and plants present a thrilling tribute to Lake Louise's protected heritage—along with offering the ideal location for receptions, celebrations and other events.

DISTINCTLY DIFFERENT DINING

The Tom Wilson Dining Room (NEW)

Explore the finest in Canadian cuisine, fresh regional ingredients and innovative dishes in the Tom Wilson Dining Room. The long, theater-style grill features a rotisserie at one end and a wood-fired oven at the other, while chefs compose brilliant options in-between. Named for the intrepid explorer who was the first European to discover Lake Louise, this striking space seats 200 people in front of towering arched windows, which let in natural alpine light and stupendous mountain and glacier views.

The Chateau offers many delicious dining options, including

- Fairview Dining Room**
- Walliser Stube**
- Poppy Brasserie**
- Lakeview Lounge**
- Glacier Saloon**
- Victoria Room (seasonal)**
- Chateau Deli**
- 24-hour In-room Dining**

EXCEPTIONAL CATERING

Select from imaginative menus to create nourishing breakfasts, energizing beverage breaks, appetizing luncheons, delectable dinners and impressive banquets. Our in-house Catering Team helps planners decide on the ultimate menu to suit budget, food preferences and dietary requirements.

HEALTH CLUB AND SPA

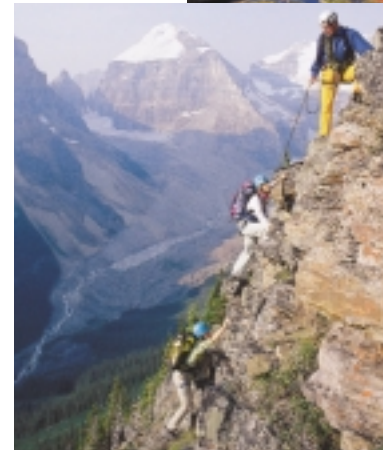
Guests enjoy the soothing benefits of a fully equipped, recently renovated Health Club featuring an indoor heated pool, steam room, whirlpool, free weights and state-of-the-art fitness machines. For more pampering pursuits, the Escape Spa offers a full range of esthetic treatments and expert salon services to relax, rejuvenate and revitalize patrons, body and soul.



Deluxe Lakeside Room



Fairmont Gold Lounge



Guided Mountaineering



Lake Louise in Summer

ACCOMMODATION

Repeatedly named to the prestigious Condé Nast Traveler "Gold List" for hospitality excellence, The Fairmont Chateau Lake Louise now offers an unequalled level of premium accommodation on the 7th floor: **Fairmont Gold**. Designed with discerning business travellers in mind, the advantages of Fairmont Gold include lavish accommodations, enhanced guestroom amenities and thoughtful privileges such as private check-in/check-out and complimentary Continental breakfast and afternoon canapés in a luxurious private lounge.

Total Rooms	550
Twin	50
Queen	31
Queen/Queen	143
King	242
Suites	72
Special Access	8
Fairmont Gold	24 (42 as of 2005)

CUSTOMIZED ADVENTURES AND EXPERIENCES

Take a Guide for the Ride

Your delegates' experience starts with a warm western welcome at the Calgary International Airport, followed by an entertaining and fascinating fact-filled journey of discovery that spans city, prairie, foothills, mountains and magical Lake Louise.

Customized Mountain Adventures

We'll design a mountain experience for delegates that is anything but ordinary: tethering a rope bridge across a river, safely climbing a mountain, building a snow hut, or following the trail of wildlife.

Adventurers of All Ages

For junior naturalists, whiz kids and significant others: from making magic to going nuts about squirrels, or mixing up a "mocktail" party, there's an event to keep you smiling long after your adventure is over.

Welcome to the Ice Age

Winter's snow and ice transform into glittering backdrops and creative materials: skate through a gleaming ice castle, build a snow hut, sculpt an ice masterpiece, or gaze at countless stars—accompanied by wonderfully warming refreshments.

National Dream

Journey back to the early days of the Rockies and the railroad: interpretive programs let visitors follow in the footsteps of explorers and dignitaries, dine in a heritage railcar, and discover the region's other grand railway hotel, The Fairmont Banff Springs.

A Native Journey

Experience the fascinating culture and customs of the Stoney people with drumming workshops, canoeing trips, wildlife interpretive events, and traditional native cuisine that makes living off the land a delicious affair.